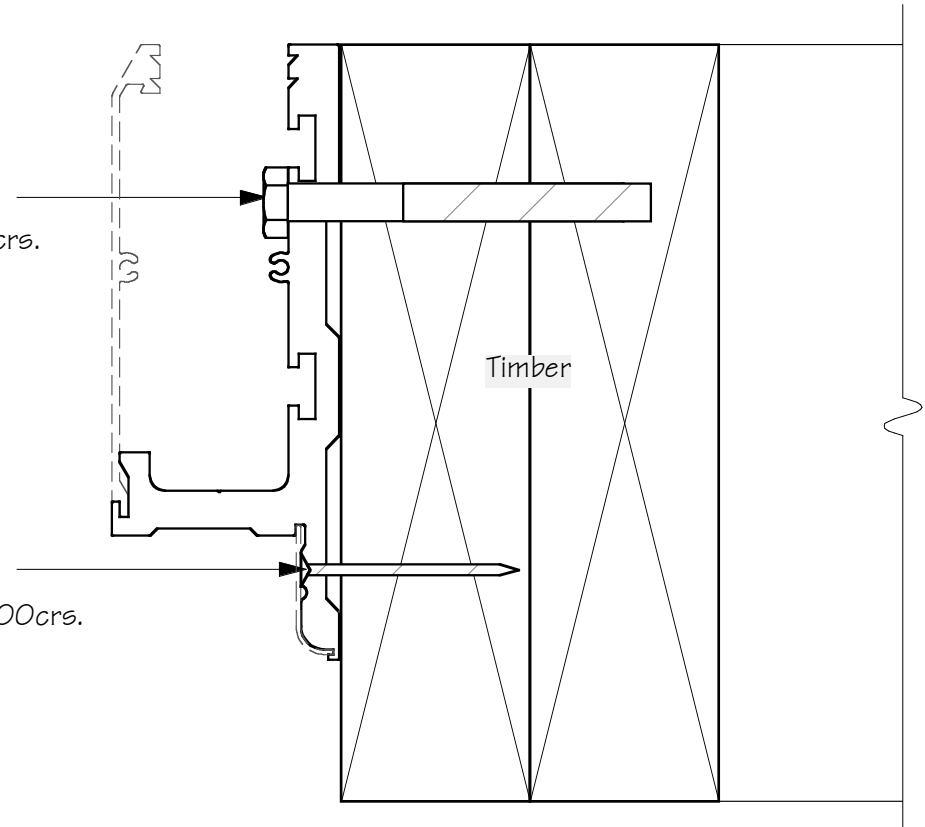


TOP CONNECTION-
M10 S/S coach screws at 400crs.

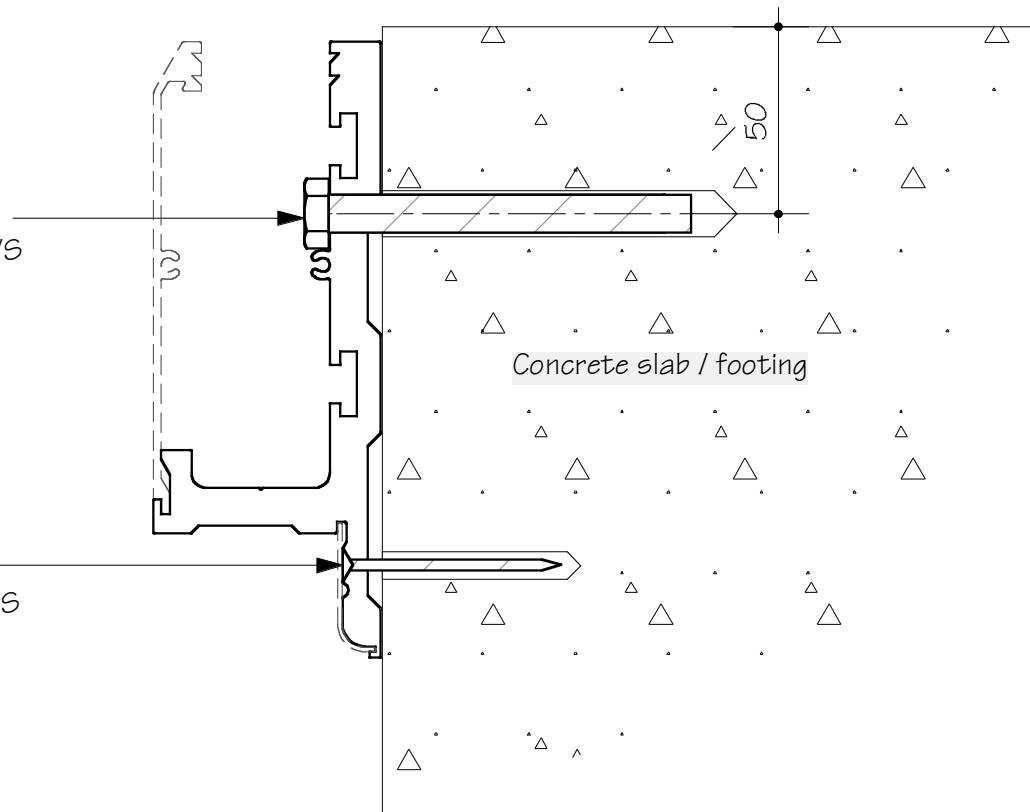
BOTTOM CONNECTION-
Gauge 14 S/S screws at max. 400crs.



TIMBER FIXING

TOP CONNECTION-
M10 Hilti RE500 + HAS-RE S/S
Rods at max. 400crs.

BOTTOM CONNECTION-
M8 Hilti RE500 + HIS- RN S/S
Sleeve + CSK S/S Screw at
400crs.

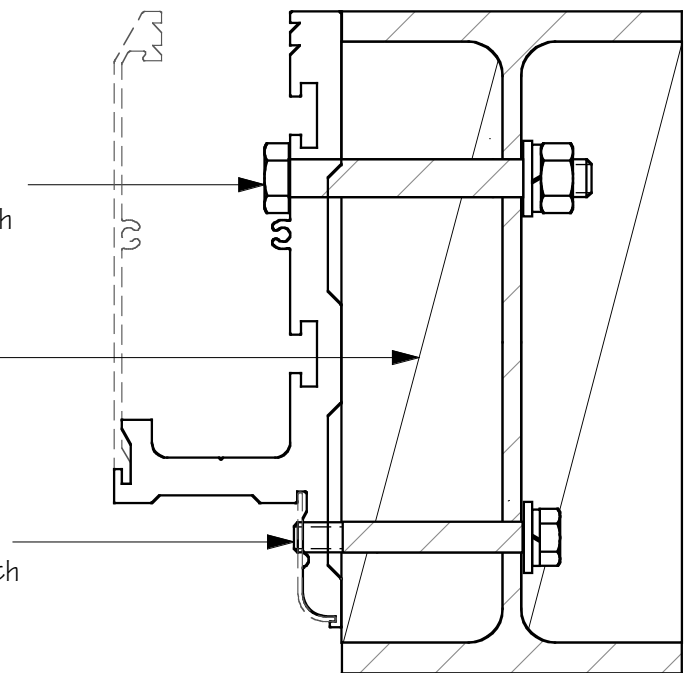


CONCRETE FIXING

TOP CONNECTION-
M10 S/S bolts @ 400mm crs. with
50x50x3 S/S washers

Timber packer to suit

BOTTOM CONNECTION-
M8 S/S bolts @ 400mm crs. with
30x30x2 S/S washers



STEEL FIXING