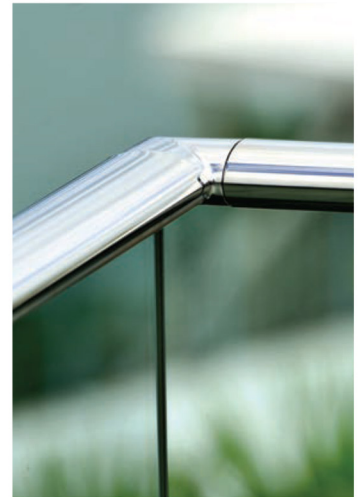
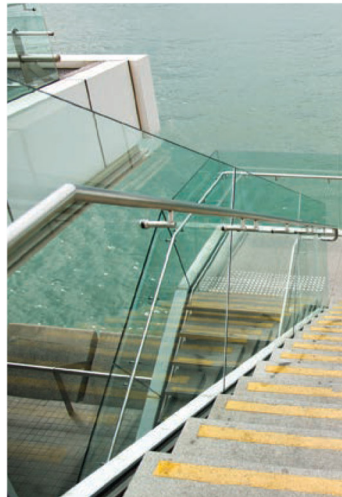




## Product Features

- A comfortable grasp and slim 30mm profile for less visual intrusion.
- Continuous sections and a range of accessories means angles and height changes can be done on site, with easy installation and no welding necessary.
- Meets the Building Code as a structural balustrade handrail and a stair handrail.
- In addition to being a top rail, it can be side-mounted to glass or walls using our stainless steel handrail brackets.
- Suits 12mm and up to 17.52mm toughened or laminated glass.
- No holes in the glass required, unless handrail brackets are used.
- Wall Brackets and End Caps available for finishing detail.
- Manufactured from 2205 Stainless Steel for long life, strength and serviceability and available in Polished Stainless or Satin Stainless finishes.



# Glass Systems H220 Oval Handrail

## Rail

### Product Code

HR200PS

HR200SS

### Description

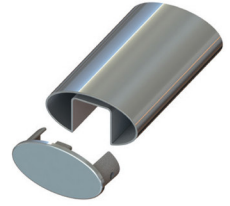
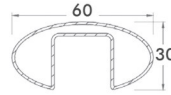
Oval Tube, 5800mm length

Oval Tube, 5800mm length

### Finish

PS

SS



## Joiners

### Product Code

HR202PS

HR202SS

HR209PS

HR209SS

HR206PS

HR206SS

HR210PS

HR210SS

### Description

180° Inline Joiner

180° Inline Joiner

90° Corner Joiner

90° Corner Joiner

Adjustable Vertical Joiner

Adjustable Vertical Joiner

Adjustable Horizontal Joiner

Adjustable Horizontal Joiner

### Finish

PS

SS

PS

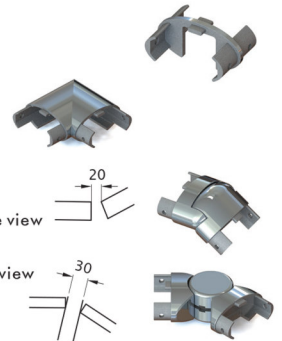
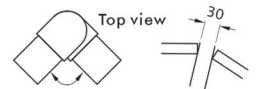
SS

PS

SS

PS

SS



## Wall Brackets/End Caps

### Product Code

HR205PS

HR205SS

HR208PS

HR208SS

HR211PS

HR211SS

### Description

End Cap

End Cap

Wall Bracket - concealed fix

Wall Bracket - concealed fix

Wall Bracket - face fixed

Wall Bracket - face fixed

### Finish

PS

SS

PS

SS

PS

SS



## Glazing Rubber

### Product Code

HR107-12

HR107-15

HR107-17

### Description

Glazing Rubber for 12mm glass

Glazing Rubber for 15mm glass

Glazing Rubber for 17.52mm glass



## Accessories

### Product Code

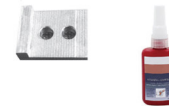
HRT

HR108

### Description

Steel template used for hole fixing

Glazing Adhesive



## Fixing Options

